



DEL210

Specifications

★ DIMENSIONS:

DEL210: 82mmLx30mmWx28mmD

★ Selectable fail-safe/secure mode

★ Voltage: 12/24VDC

★ Current Draw: 300mA/12VDC, 150mA/24VDC

★ Door status sensor, and Lock status sensor

★ Aluminum Painted Finish

★ OPTIONS:

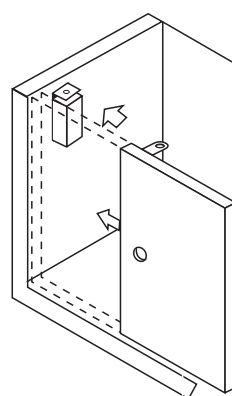
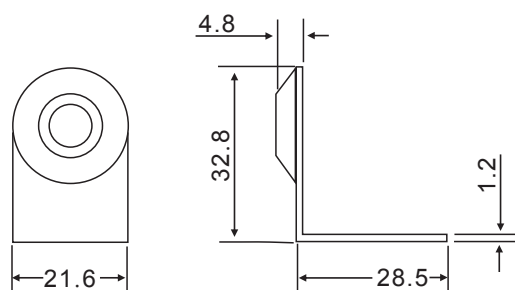
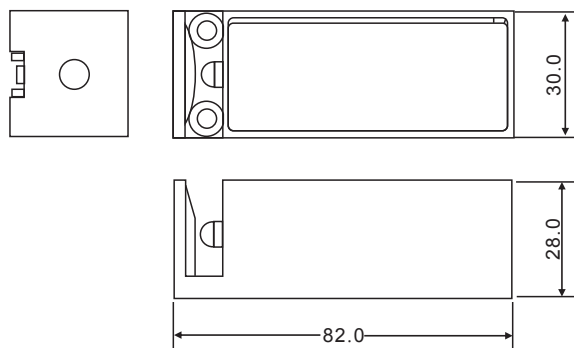
Lock signal-DEL210SL

Door signal-DEL210SD

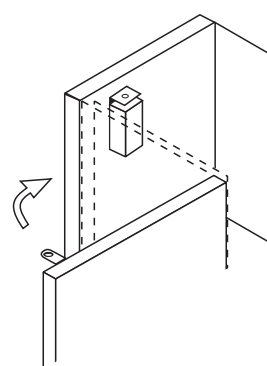
Door & Lock signal-DEL210SLD

★ PATENT

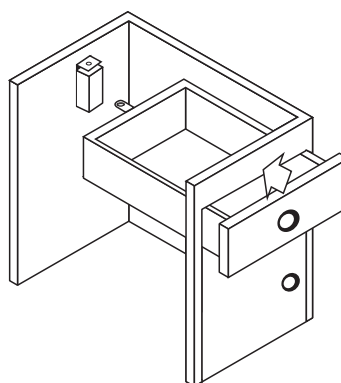
Application



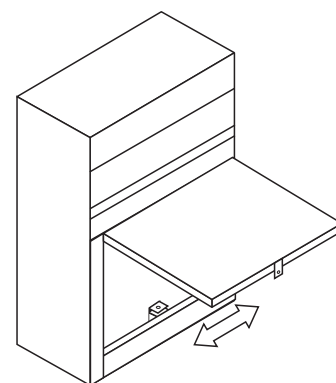
FRONT SLIDING
LOCK POSITION



SIDE SLIDING
LOCK POSITION



FRONT SLIDING
LOCK POSITION



SIDE SLIDING
LOCK POSITION

CL102B Bluetooth Cabinet Lock

The BSI CL102B Bluetooth Cabinet Lock provides security and access control for a wide variety of cabinets and drawers, storage lockers and more. CL102B works in both Android and iOS smart phones.

- **Multiple Access**

CL102B has 3 access solutions, Bluetooth, Touch to open, and Key Override for your convenience

- **Bluetooth**

Download our APP from iOS or Android smart phone. Use your phone for keyless convenience and secure access

- **Mechanical Key Override**

It can also be unlocked with a mechanical key



Application

Home Parcel Box

The modern e-commerce allows us to order anything from different websites, but we are always on duty during the delivery time, we worry about there might be a thief may steal our parcel when the deliveryman place it in front of our doors.

Parcel Lock Solution provides a safety and convenient parcel storage method, which allows deliveryman to open the parcel box by entering a one-time password into the mobile phone, and notice the consigner that the parcel has delivered. We can open our parcel box when we come home through a paired mobile phone.

Commercial Logistic Locker

Commercial Logistic Locker Solution provides a self-service parcel delivery service, customers can select any Locker location as their delivery address, and retrieve their orders at that location by entering a unique pick- up code on the mobile phone.

Customers can also return the orders through the Locker, the delivery man will retrieve the order back to the warehouse for inspection.

Specifications

Dimensions	35 x 125 x 20mm	Input Voltage	5VDC
Bolt Materials	Zinc Alloy	Working Current	1A
Door Thickness	< 2cm	Batteries	2 x AA batteries
Cylinder Diameter	2cm		

CL101 Programmable Keyless Cabinet Lock



The BSI CL101 Battery Powered Keyless Cabinet Lock provides an easy, economical solution for security and keyless access control for a wide variety of cabinet doors, drawers, storage lockers and more. Quickly and easily add/delete up to 30 individual user PIN codes with programmable keypad. Powered by 2 x AAA batteries, the need for low voltage wiring is eliminated.



Features

- For new installations or retrofit of existing manual cam lock prep
- Vertical or horizontal keypad mounting
- Multiple locking cam positions, Left/ Right, Bottom
- Programmable Multiple User Mode or 1-Time Use Mode
- 1 Master Code: Full programming and control capabilities
- 1 Sub-Master: Limited programming for user codes, maintained unlock, unlock time only
- 30 user, 4-6 digit PIN codes, must be same length as Master Code. Field optional user changeable PIN
- Unlock time programmable from 1 to 9 sec. Factory default 3 sec.
- Red/ Blue bi-color LED
- Keypad tamper lockout: Inoperable for 10 seconds after 3 incorrect code entries
- 2 x AAA batteries (included), up to 15,000 operations
- Concealed manual key cylinder (replaceable), 2 keys, battery failure override
- Battery failure override, apply 9V battery to external contacts, enter master code
- 2 programmable application modes
 - a. Multiple User Mode: Normally locked, up to 30 assigned user PIN codes. Authorized code entry releases lock for 1 to 9 seconds
 - b. 1-Time Use Mode: For temporary/ rotating user applications. Normally unlocked, new user enters a code to lock. Re-enter same code to unlock and erase code. The next user repeats operation